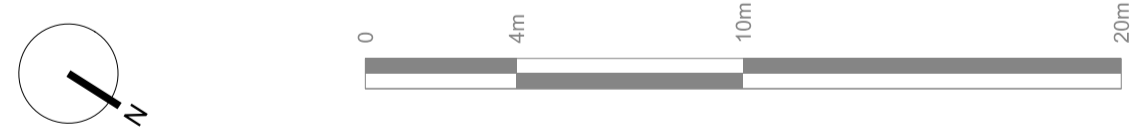
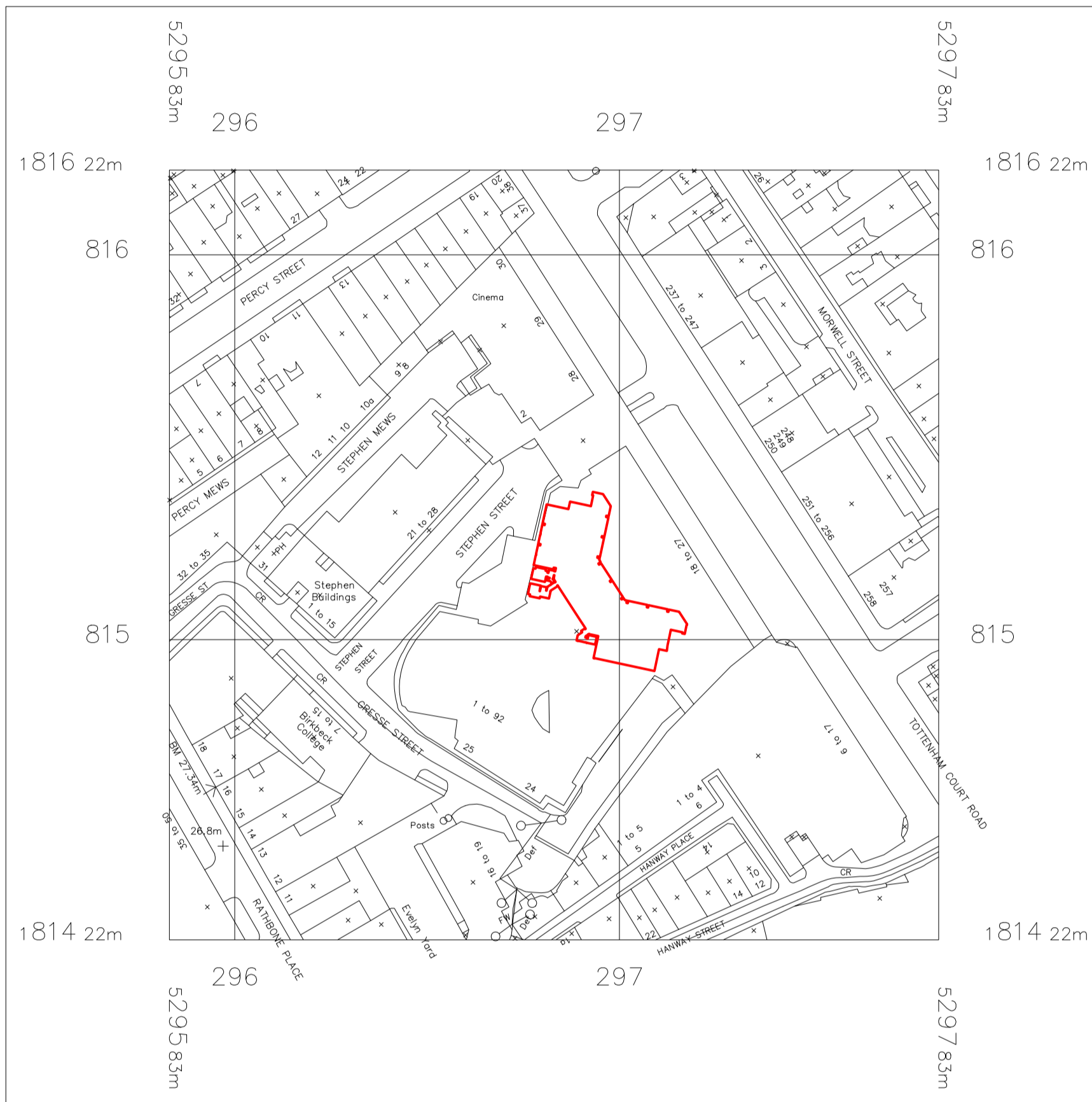
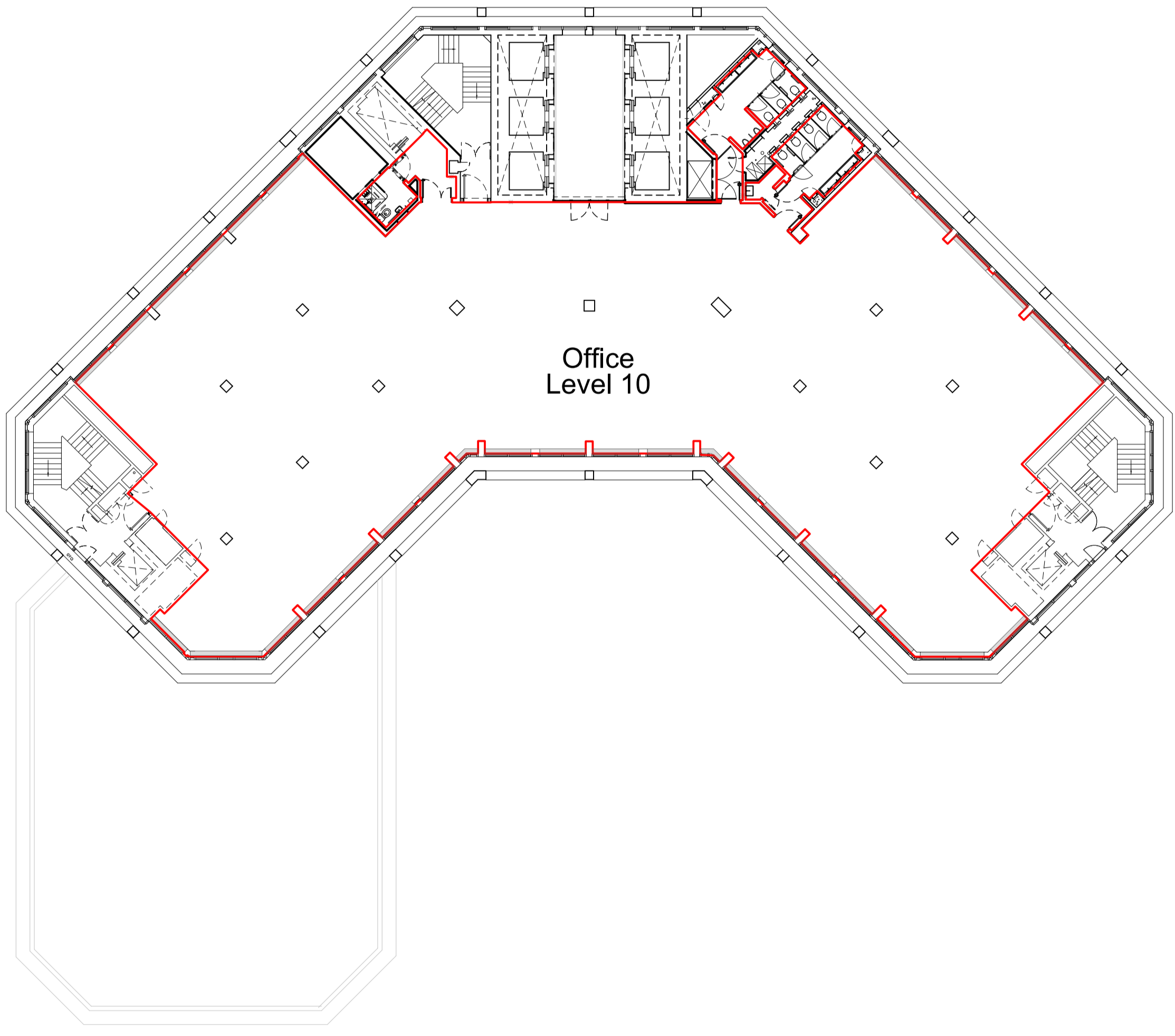


Notes:

KEY  
Line of demise



A Demise Plan Level 10 1:200



B Demise Plan Level 10 1:1250

- B 26.11.14 Issued for Information
- A 18.11.14 Issued for Information
- P2 30.08.13 Issued for Information
- P1 12.07.13 Issued for Information

Revision:

ORMS

Architecture Design

1 Pine Street London EC1R 0JH  
T 0207 833 8533 F 0207 837 7575  
E orms@orms.co.uk

Project No.1 Stephen Street

Drawing title Level 10 Demise Plan

Scale 1:200 @ A1 Drwg. No. 1984\_LG\_60 Rev. B

Date July '13  
Status  For information  For tender  For construction

Do not scale. All dimensions to be confirmed on site. Information contained in this drawing is the sole copyright of ORMS Designers & Architects Ltd. and is not to be reproduced without permission.